

# Understanding Gender, Attraction, and Expression Beyond the Binary: SOGIE 101



May 19-20, 2022

- OR -

June 23-24, 2022

9:00 AM-

12:00 PM



Register via [sccLearn](#)

Training via Zoom - login details to be provided. *Full visual (webcam) and audio participation required to obtain CEUs*

Email [theqcorner@hhs.sccgov.org](mailto:theqcorner@hhs.sccgov.org) with questions.

## Training Objectives

- Differentiate between Sex Assigned at Birth, Gender Identity, Attraction (Sexual Orientation) and Expression.
- Identify barriers and support for the overall health and wellness of LGBTQIA+ community members, including historical barriers present in behavioral health systems and services.
- Utilize best practices when collecting and managing SOGIE information and data.
- Identify state and federal policies protecting both clients and staff on the basis of Gender, Attraction (Sexual Orientation), and Expression
- Understand the significance of policies related to access and quality of care in institutions for LGBTQIA+ clients

**Audience: Santa Clara County Behavioral Health Services staff and contracted agencies.**

A 6-hour training provided by the County of Santa Clara Behavioral Health Services Department with support from LGBTQ Wellness

**5.5** CEU Credits  
**Free Training**

## Course Description

This training will provide historical context for the more limited categorizations of gender, attraction, and expression beyond binary categories as well as the behavioral health specific context of pathologization of gender, attraction, and expression. Beyond understanding history and context, participants will also gain a deeper understanding of concepts related to gender, attraction, and expression that may have previously been part of an LGBTQIA+ or SOGIE 101 training including an intersectional framework. This training will provide best practice guidelines as well as actionable changes that will be implemented to better support clients in service delivery, especially clients who may not be cisgender or heterosexual.

## Trainers:



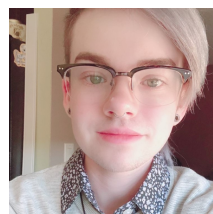
**Isabella Garcia, MPH**  
(she/they)

Management Analyst for The County of Santa Clara BHSD Program The Q Corner and Professor in the Public Health and Recreation Department at SJSU with a background in Psychology, Sociology and Public Health.



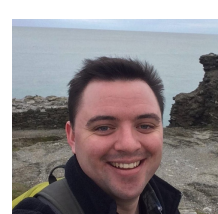
**Luisa Salas**  
(she/her)

Mental Health Peer Support Coordinator for Caminar's LGBTQ Wellness program. Luisa has a background in Communications, facilitates educational trainings, provides support and advocates for community needs



**Emmett Marsh**  
(he/they)

Mental Health Peer Support Worker, with The Q Corner Program with a background in Psychology, and a love for working with the LGBTQIA+ community with a focus on providing transition resources and support for community.



**Jack Roach**  
(he/him)

Program Coordinator for Caminar's LGBTQ Wellness and has several years of experience coordinating lived experience panels, providing LGBTQIA+ trainings, and direct support to the LGBTQIA+ community.



COUNTY OF SANTA CLARA  
**Behavioral Health Services**



Santa Clara County Behavioral Health Services Department (SCCBHSD) is approved by the CA Association of Marriage and Family Therapist (CAMFT) to sponsor continuing education for Santa Clara County LMFTs, LCSWs, LPCCs, and/or LEPs. SCCBHSD maintains responsibility for this program/course and its content. This course meets the qualifications for 5.5 hours of continuing education for LMFTs, LCSWs, LPCCs, and/or LEPs, as required by the CA Board of Behavioral Sciences (BBS). CAMFT is the BBS recognized approval agency-Provider # 131775. SCCBHSD also is approved by CA Consortium of Addiction Programs and Professionals (CCAPP) to provide CEUs.

Lunch and scheduled breaks during the training do not count towards CEU credit.

Please contact Learning Partnership if you need accommodations for one of our trainings at [LPTraining@hhs.sccgov.org](mailto:LPTraining@hhs.sccgov.org).

You now can download/print your own CEU Certificates online at sccLearn 2-4 weeks after the training date.

Do you have a Grievance? Please email the Learning Partnership at [LPTraining@hhs.sccgov.org](mailto:LPTraining@hhs.sccgov.org)